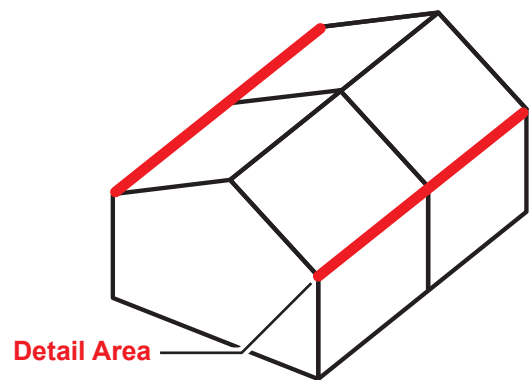


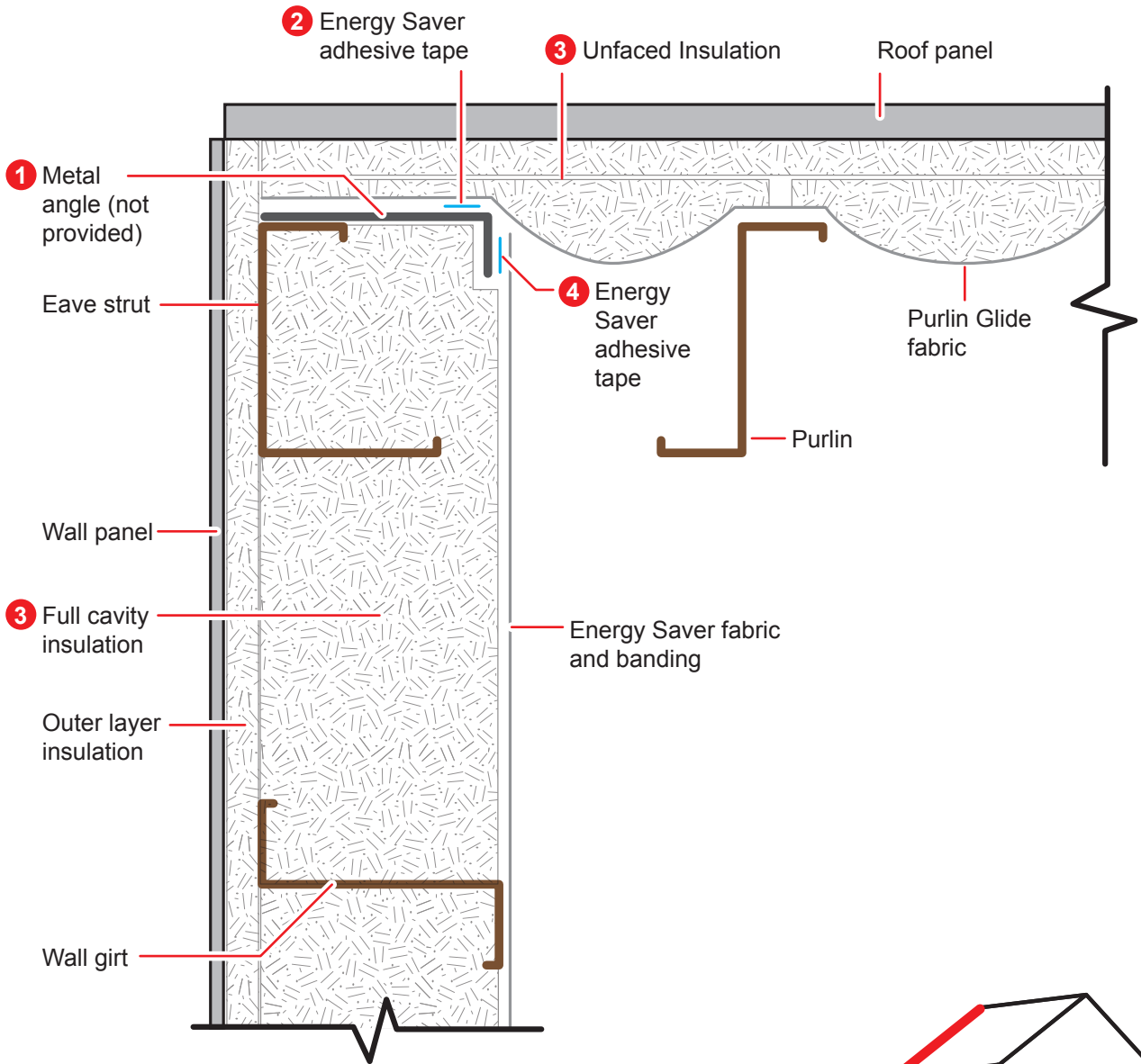
! Metal angle must be connected to eave strut before roof is started.

! **WARNING** Metal angle is not provided by Silvercote.

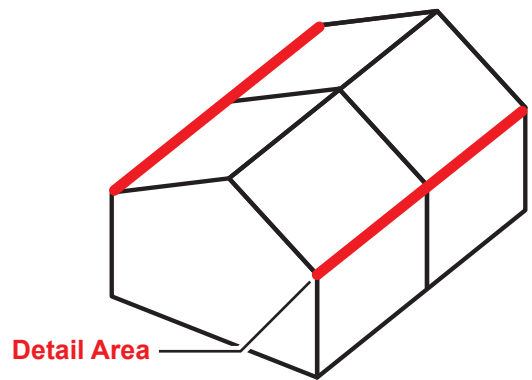


SIL803-003 9/22

Drawing not to scale



- !** Metal angle must be connected to eave strut before roof is started.
- !** **WARNING** Metal angle is not provided by Silvercote.



SIL803-003 9/22

Drawing not to scale



Before installing insulation in wall:

- 1** Attach the metal angle to the top flange of eave strut. The downward flange of the angle should be plumb with the inside of the girts. The angle used should be of heavy enough gauge to remain rigid.
- 2** Apply the Energy Saver double sided tape to the top flange of the angle and the downward leg of the angle. Peel paper from tape on top flange to stick to the roof facing.
- 3** Install the roof and wall insulation.
- 4** Peel paper from tape on downward leg of angle and complete installation of the Energy Saver wall liner fabric by sticking it to the downward leg to create a continuous envelope.

SIL803-003 9/22

Drawing not to scale



Purlin Glide Roof to Energy Saver Wall Connection