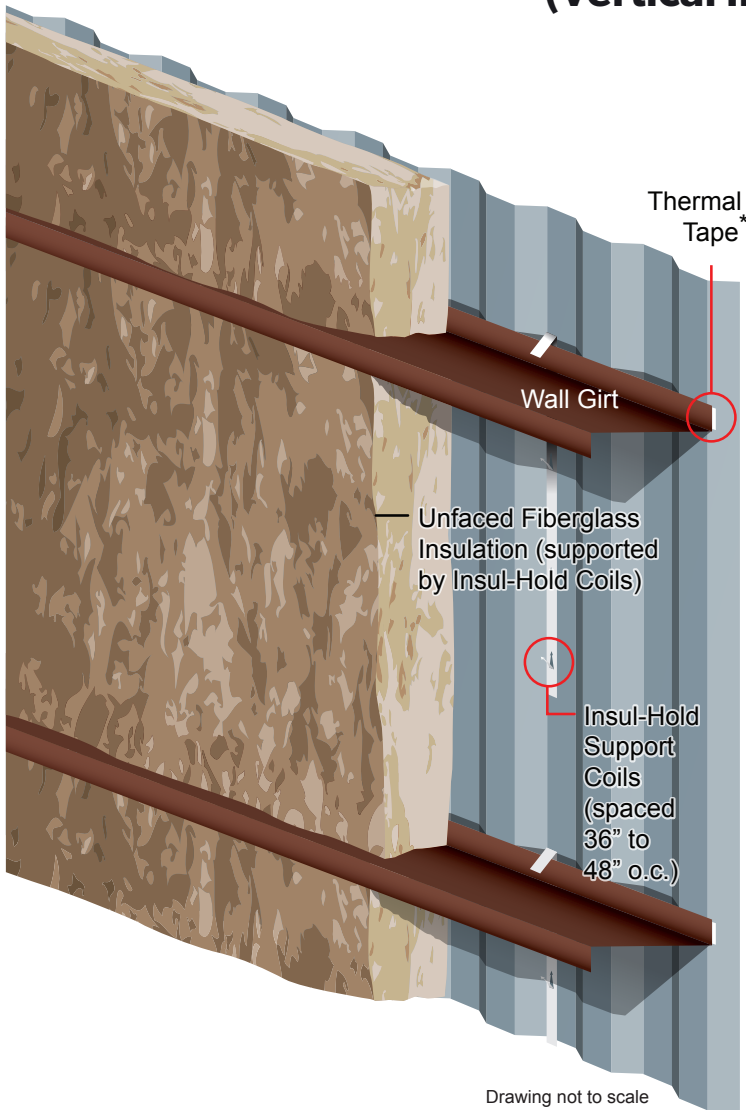


INSUL-HOLD COILS

Installation Instructions (Vertical Installation)



Step 1:

Cut 36" pieces of Insul-Hold and crimp to the outer flange of the wall girts. These should be placed with the arrows pointing up - 2 runs per roll of insulation evenly spaced.

Step 2:

Bend the arrows inward at a 45 degree angle.

Step 3:

Prepare pieces of insulation to fit the dimension from girt to girt and impale it onto the Insul-Hold arrows for support.

* 1/4" x 3" Thermal tape typically used with Energy Saver Walls, 1/8" x 3" Thermal Tape typically used on unfaced or liner panel walls.

**PLEASE CONTACT YOUR SILVERCOTE SALES REPRESENTATIVE
FOR MORE INFORMATION AT (844) 232-3701 OR INFO@SILVERCOTE.COM**