



Retro Wall Install Instructions

FOR RETROFIT CONSTRUCTION

Read the entire instructions before you begin.

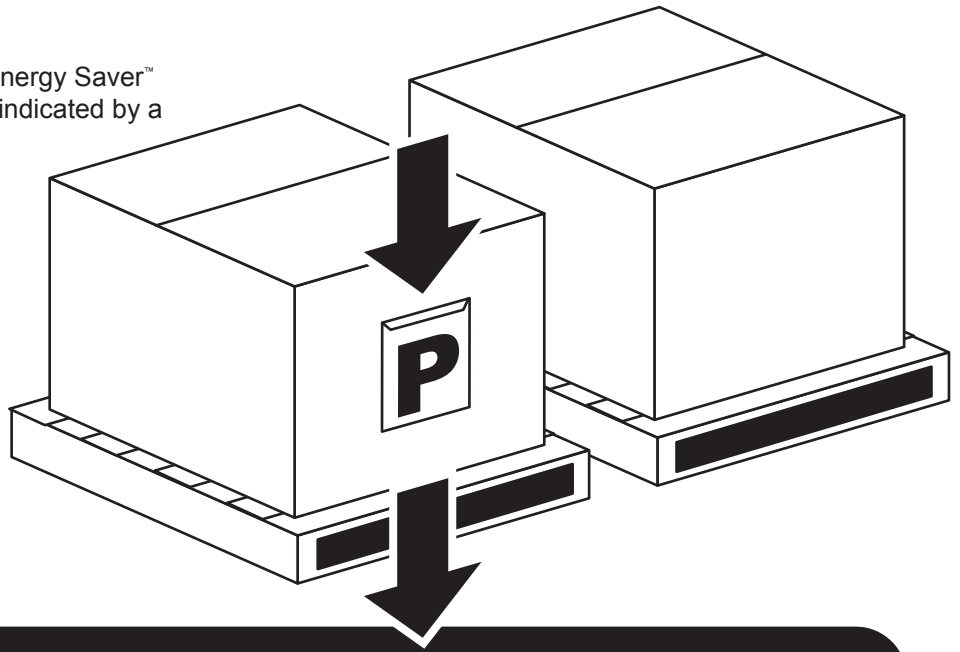
Before you begin:

Locate the shipping pallet that contains the Energy Saver™ System installation packet. The pallet will be indicated by a marked sticker.

It will contain:

- *Jobsite Cutlist* - Used to inventory all Energy Saver fabric/components and unfaced insulation rolls. Additionally, it will indicate where the products are to be installed on your project.
- *Installation Instructions* - These will be used to explain the steps involved with the Energy Saver Retro system.
- *Packing Slip(s)* - The carrier's paperwork detailing delivered materials.

Please be sure to inventory all materials and mark any shortages.

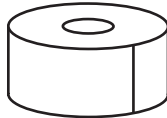


The pallet(s) will also contain the accessories needed for the successful completion of the fabric liner system:

$\frac{3}{4}$ " metal TEK screws with washer



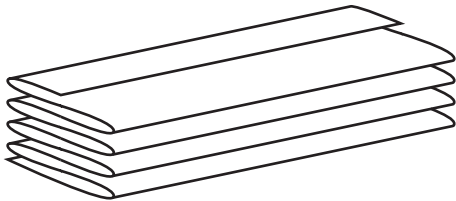
Patch tape



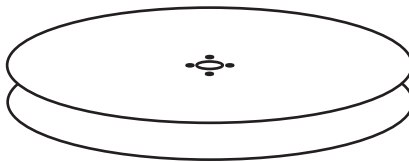
Energy Saver adhesive tape



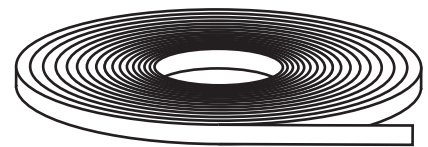
Energy Saver fabric (bagged and labeled with size and installation locations)



Energy Saver banding dispenser



Energy Saver banding



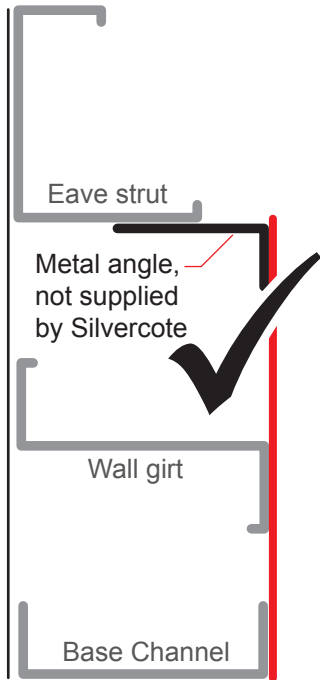
! Because of the wide variety of situations which may be encountered Especially, in a retrofit application, additional secondary attachments may be needed for a successful application. Visit silvercote.com for detail drawings that address some of the situations which may be encountered. It is recommended that these be reviewed and modifications be made prior to beginning the installation of the Energy Saver Retro System. If situations are encountered which are not covered in these drawings contact your Silvercote representative for additional assistance.

These instructions assume that there is already a layer of insulation between the girt and wall panel. If this layer is not present this system can still be used, but it will not have the frost break on the outside of the girts. While it is best for the frost break to be on the outside, thermal tape can be ordered and installed on the inside flanges.

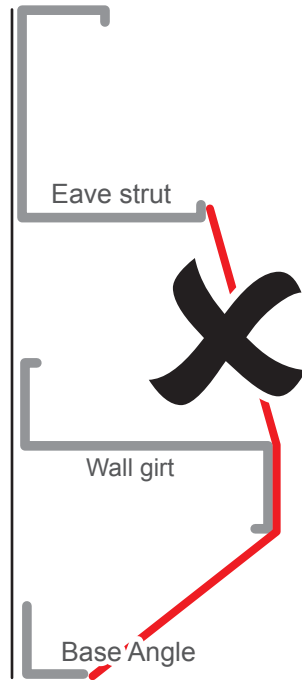
What an Energy Saver wall does!

Providing a clean, plum and finished appearance is only part of a correctly installed Energy Saver Wall System. Properly filling the cavity must also be done to provide optimal performance.

The **facing** is plum with wall girts



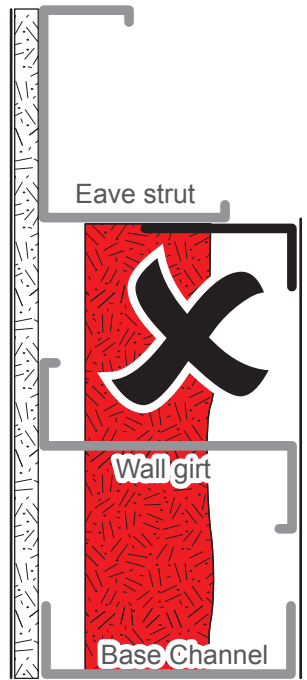
The **facing** needs additional support



The **insulation** fills the cavity



The **insulation** is creating gaps

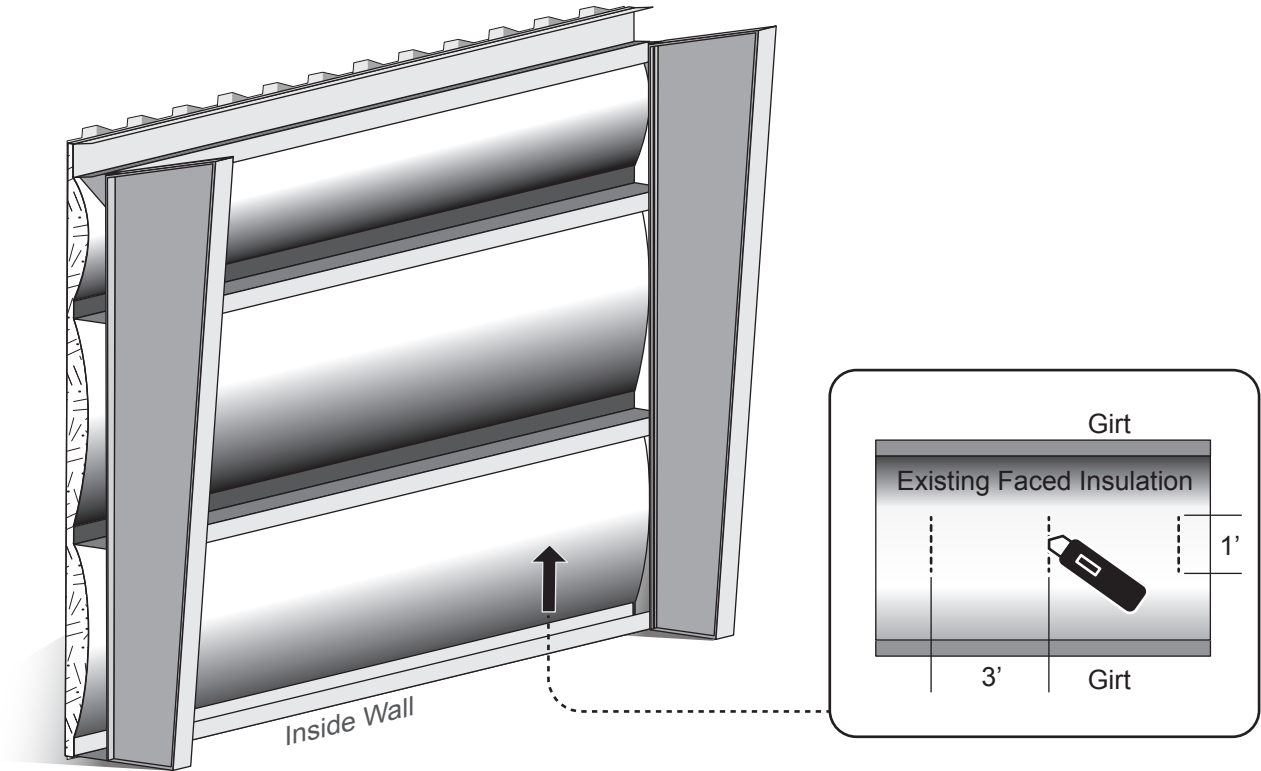


! We recommend using a metal angle, not supplied by Silvercote, as the most durable connection (Technical Detail SIL 800). While this angle may not be supplied as a standard part by many manufacturers it is typically available at an additional charge, or can be purchased locally.

A basic method is to use the supplied banding and tape to make this connection. See Technical Detail SIL812 available at www.silvercote.com

WALL – STEP 1. Perforating the vapor barrier

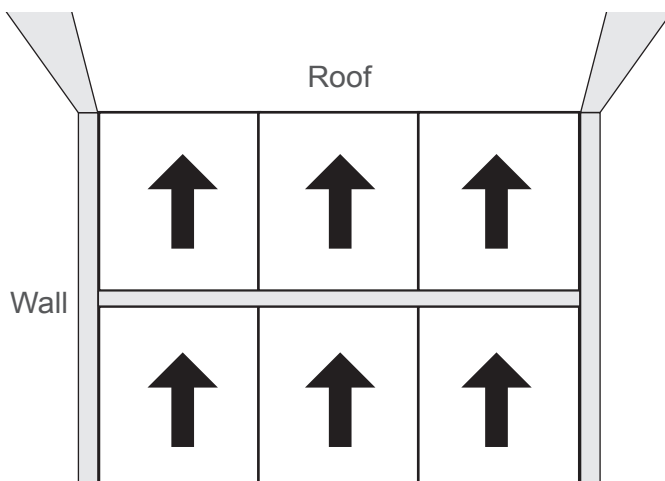
1.1 To eliminate a double vapor barrier, using any sharp object such as utility knife or wall paper perforation tool, perforate the facing of existing insulation above purlins. Cut a one foot slice approximately every 3' of each purlin space.



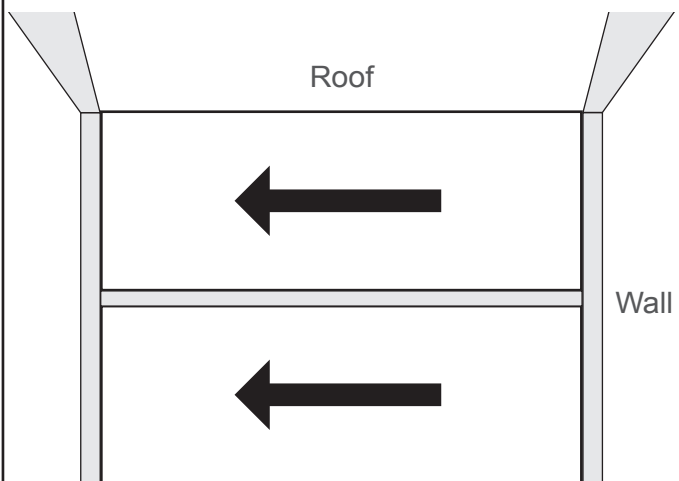
WALL – STEP 2. Vertical or Horizontal Insulation Install

2.1 Your Energy Saver wall was ordered for the insulation to be installed Vertically or Horizontally. Determine which you have.

Vertical insulation install - GO TO STEP 3

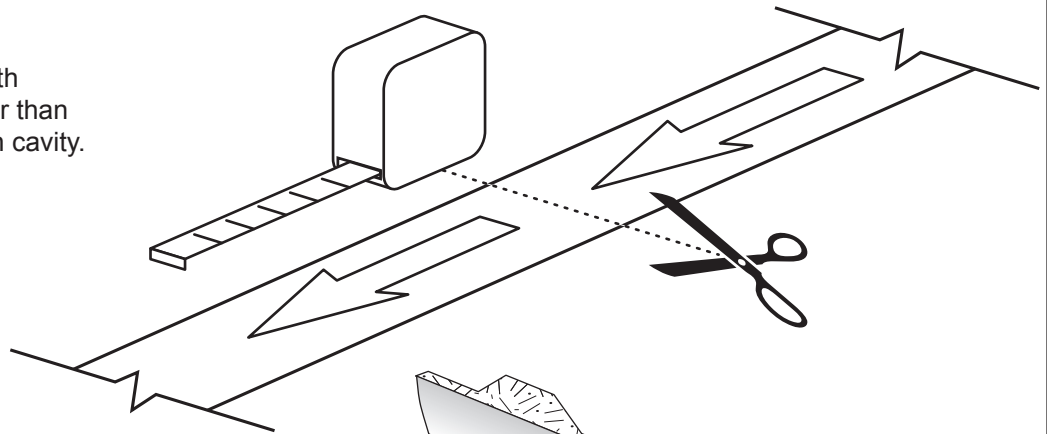


Horizontal insulation install - GO TO STEP 4



WALL – STEP 3. Vertical Insulation Install

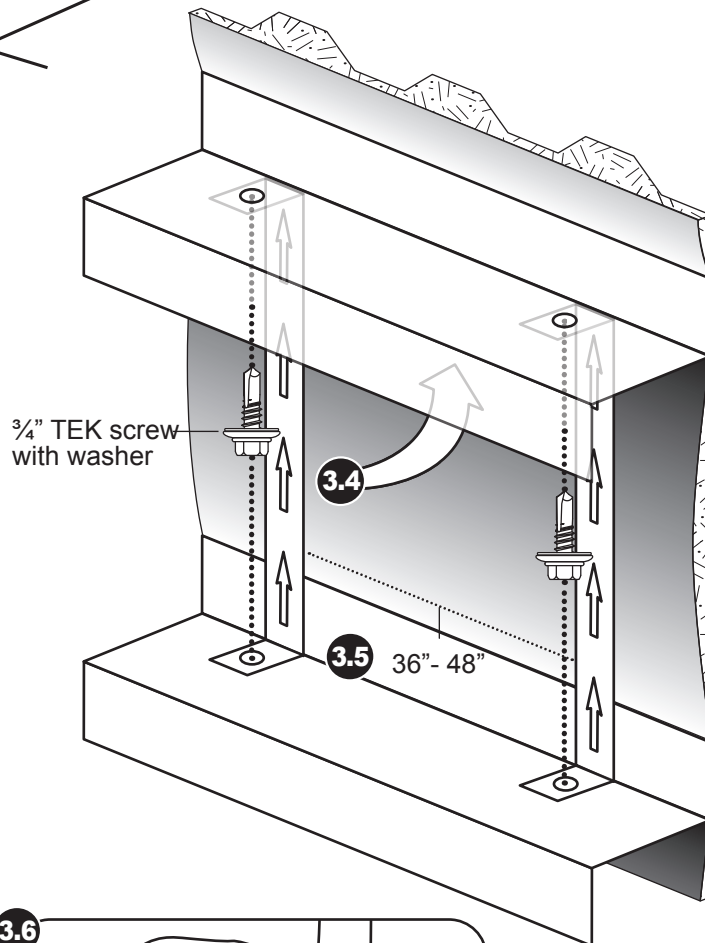
3.1 Cut Insul-hold to a length approximately 5" greater than the height of each purlin cavity.



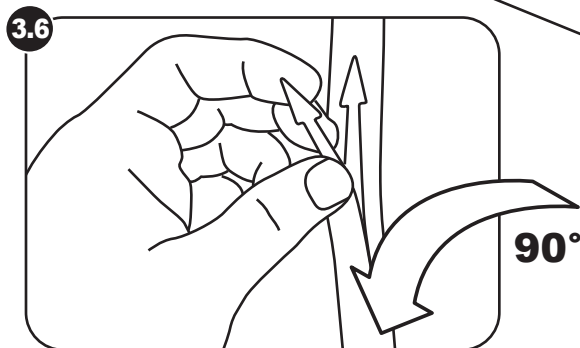
3.2 Bend both ends of Insul-hold at 90° angles. With arrows pointing up use a 3/4" metal TEK screw to attach these pieces of banding to the web of the top and bottom of purlins in each space as close to the outer flange as possible.

Note: If needed a short piece of Insul-hold can be added at ends of insulation rolls for proper support.

3.3 Insul-hold should be placed at 36"- 48" apart.



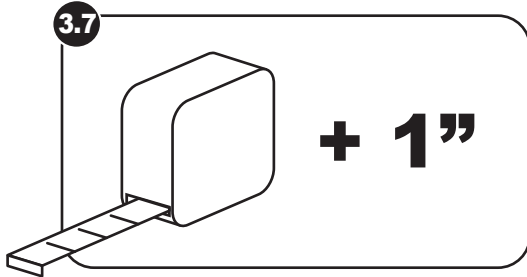
3.4 Bend arrows down to a 90° angle.



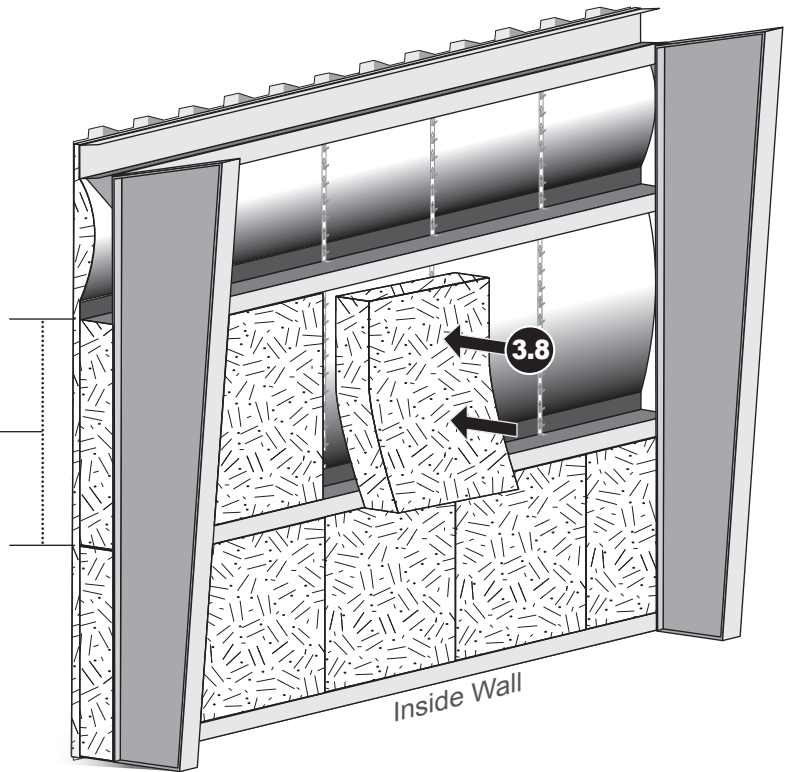
Bend arrow toward the inside of building

WALL – STEP 3. Vertical Insulation Install (CONTINUED)

3.7 Cut supplied rolls of unfaced insulation to appropriate girt space size 1" longer than girt space to assure a friction fit.



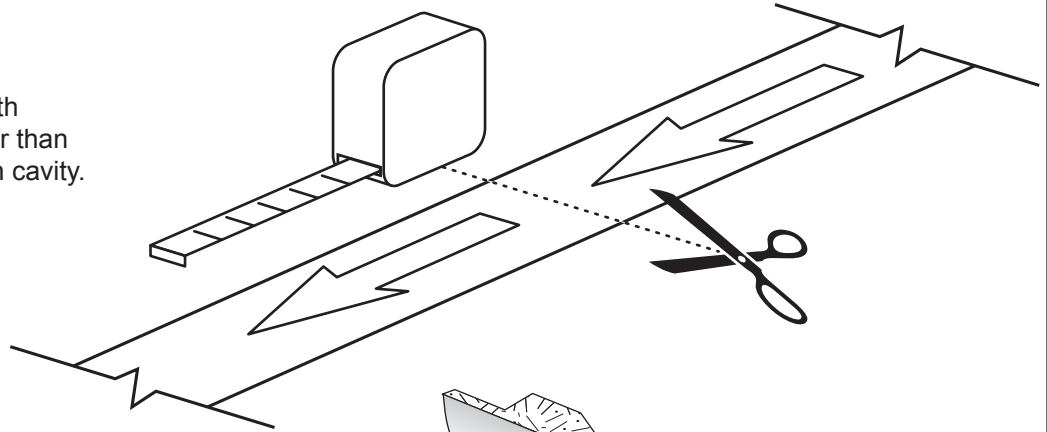
3.8 Install insulation in the cavity vertically by impaling it on the Insul-hold arrows for support. Take special care there are no gaps between each piece of insulation.



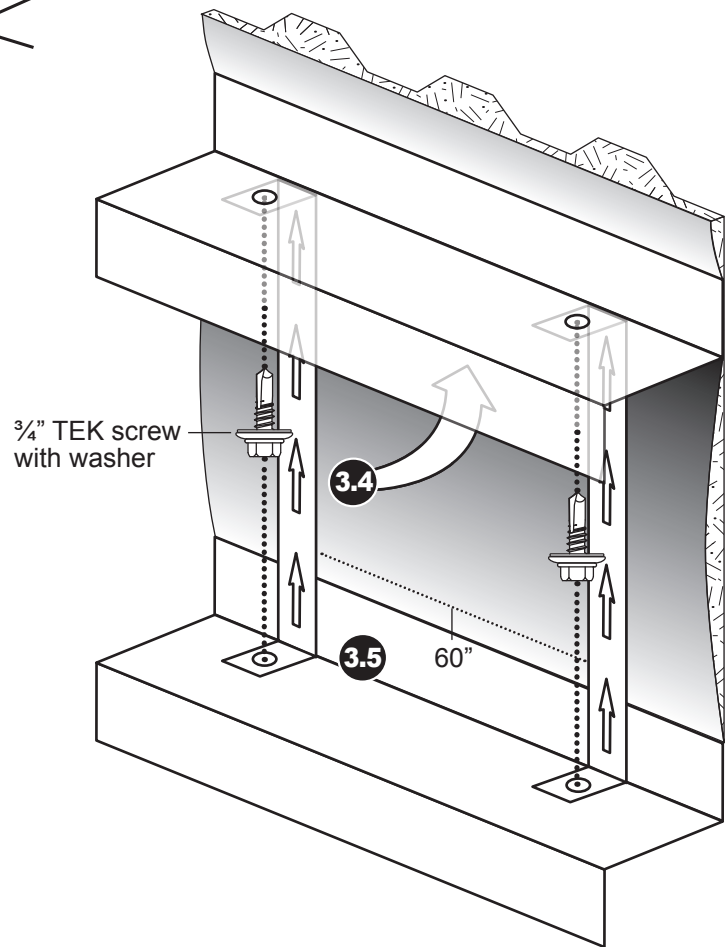
WALL – Continue to STEP 6

WALL – STEP 4. Horizontal Insulation Install

4.3 Cut Insul-hold to a length approximately 5" greater than the height of each purlin cavity.

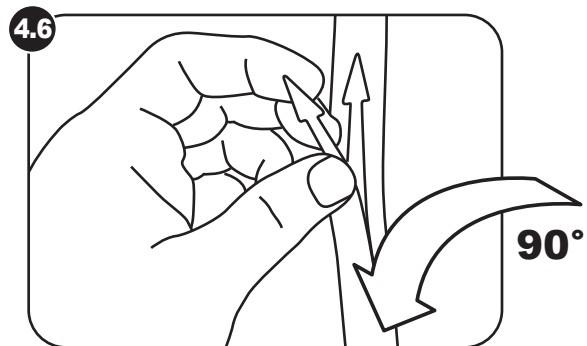


4.4 Bend both ends of Insul-hold at 90° angles. With arrows pointing up use a 3/4" metal TEK screw to attach these pieces of banding to the web of the top and bottom of purlins in each space as close to the outer flange as possible. Note: If needed a short piece of Insul-hold can be added at ends of insulation rolls for proper support.



4.5 Insul-hold should be installed on 60" centers.

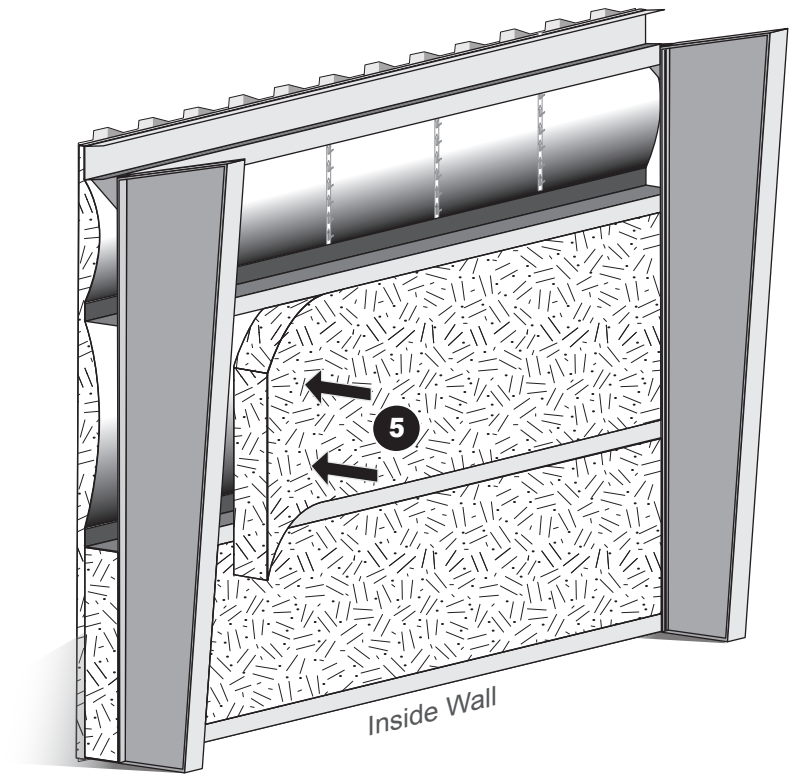
4.6 Bend arrows down to a 90° angle.



Bend arrow toward the inside of building

WALL – STEP 5. Horizontal Insulation Install

- 5 Locate the proper width of insulation for the height of each girt space. Unroll insulation impaling it on Insul-hold arrows. Be sure to butt roll ends tightly to avoid spaces.

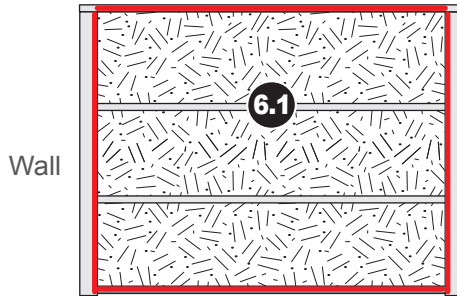


WALL – Continue to STEP 6

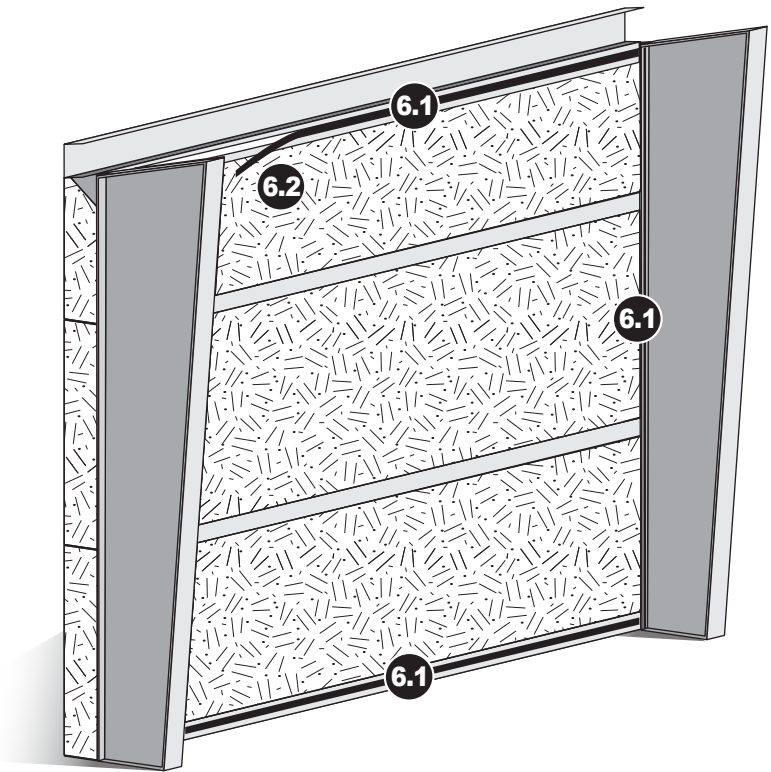
WALL – STEP 6. Install the Energy Saver wall fabric and banding

6.1 Apply the Energy Saver double-sided tape to the metal angle at the Eave Strut, along the base channel and along the sides of the main structurals.

! WARNING - Metal angle is not provided by Silvercote.

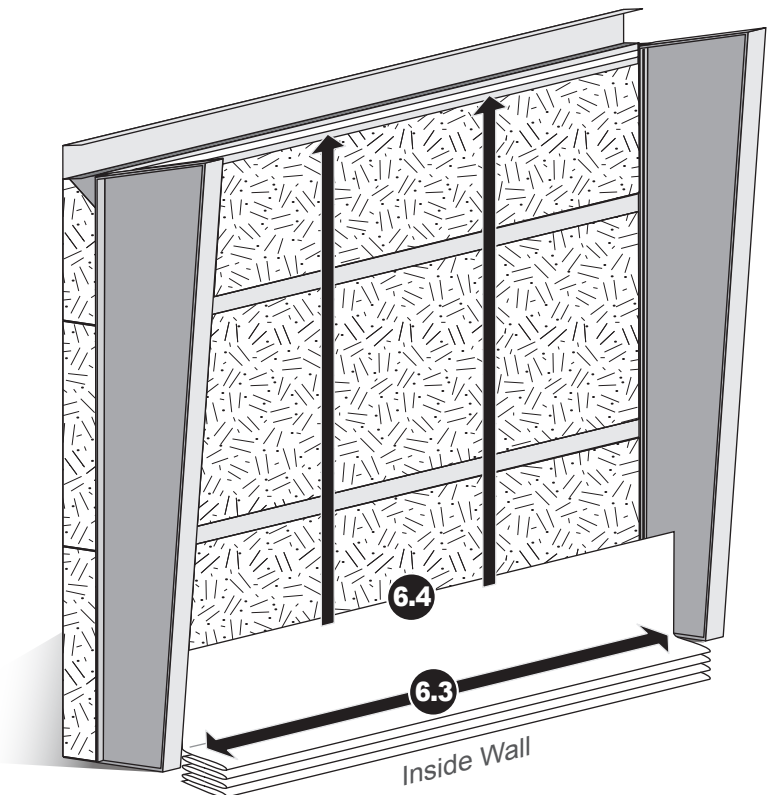


6.2 Remove the tape backing along the metal angle only.



6.3 Unfold fabric bundle between main frames.

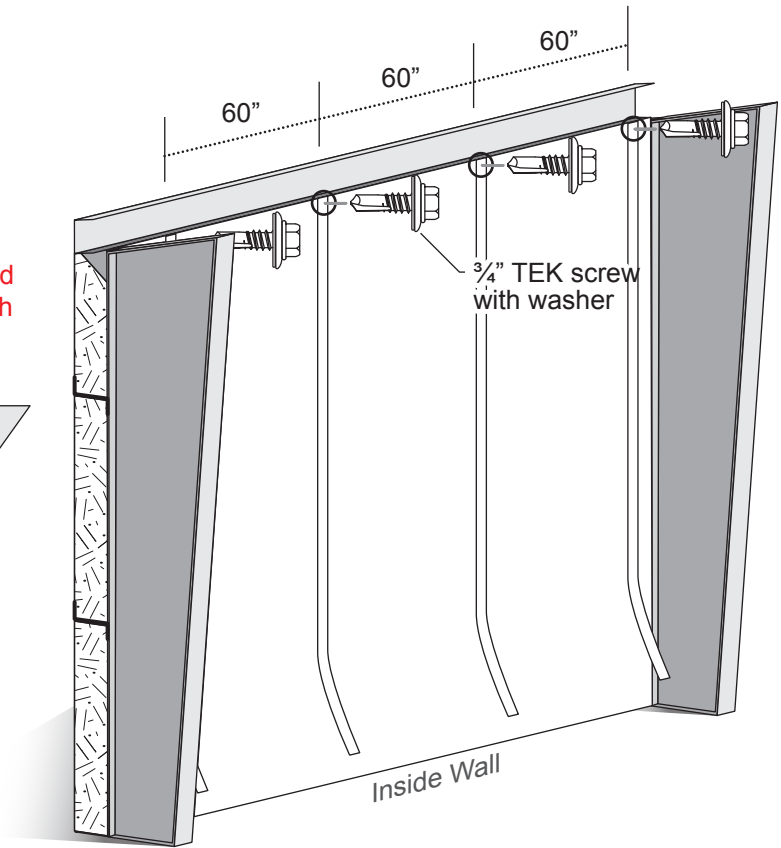
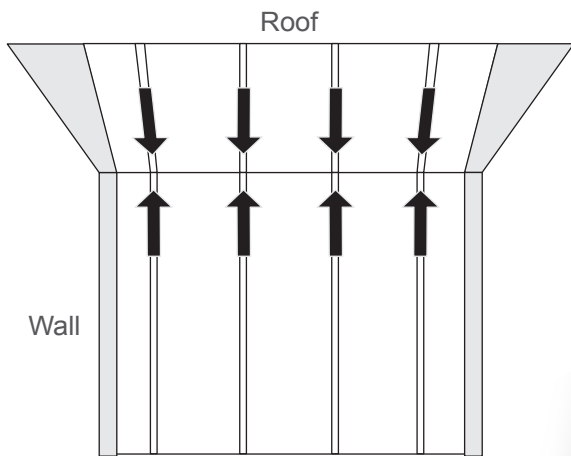
6.4 Pull fabric up toward eave strut making sure fabric is square and without wrinkles and apply to double-sided tape.



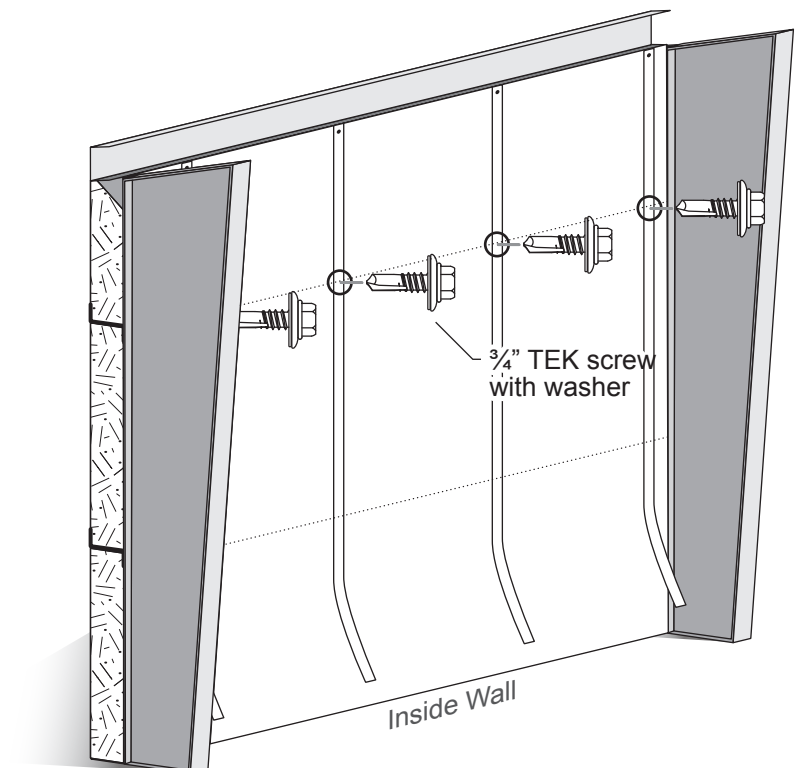
WALL – STEP 6. Install the Energy Saver wall fabric and banding (CONTINUED)

6.5 Fasten $\frac{3}{4}$ " TEK screws with washers through the banding and fabric into the metal angle on 60" centers.

NOTE: If installing in conjunction with Energy Saver roof insulation it is recommended that the bands be positioned in line with the cross bands of the roof system.

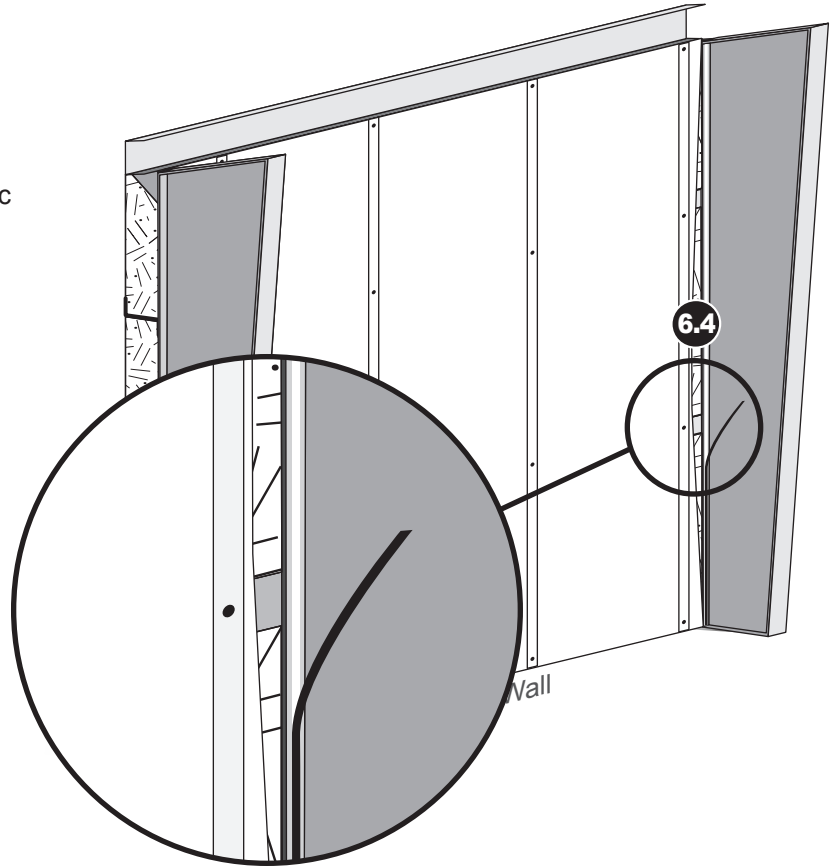


6.6 Working your way down from the top, smooth the Energy Saver fabric out ensuring there are no wrinkles and install $\frac{3}{4}$ " TEK screws with washers through the banding at each wall girt down to the base channel.



WALL – STEP 6. Install the Energy Saver fabric and banding (CONTINUED)

6.4 Gently pull the Energy Saver fabric back from the main structurals and remove the backing from the Energy Saver double sided tape. Apply the Energy Saver fabric to the tape. Press firmly to ensure the Energy Saver fabric adheres to the tape.



Endwall, Sidewall and Roof applications technical details

The following technical sheets can be downloaded from silvercote.com or your Salesperson.

ENERGY SAVER WALL TO ENERGY SAVER ROOF CONNECTIONS

SIL800 - Energy Saver
Sidewall to Energy Saver
Roof - Angle Connection

SIL813 - Energy Saver
Expandable Endwall to
Energy Saver Roof
Connection

SIL814 - Energy Saver
Non-Expandable Endwall
to Energy Saver Roof
Connection

SIL812 - Energy Saver
Sidewall to Energy Saver
Roof - Banding Connection

SIL815 - Energy Saver roof to
Energy Saver Expandable
Endwall Banding Connection

ENERGY SAVER WALL CONNECTIONS

SIL810 - Energy Saver Door
and Window Connection

SIL811 - Energy Saver Wall
Base Chanel Connection

SIL816 - Energy Saver Wall
Base Angle Connection

ENERGY SAVER WALL TO OTHER ROOF SYSTEMS

SIL802 - Sag N Bag Roof
to Energy Saver Wall

SIL803 - Purlin Glide Roof
to Energy Saver Wall

SIL804 - PIR Board Roof
to Energy Saver Wall

SIL805 - MBI Roof to
Energy Saver Wall

SIL806 - Long Tab Banded
Roof to Energy Saver Wall