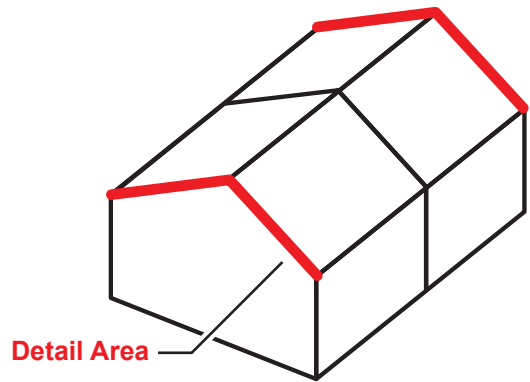
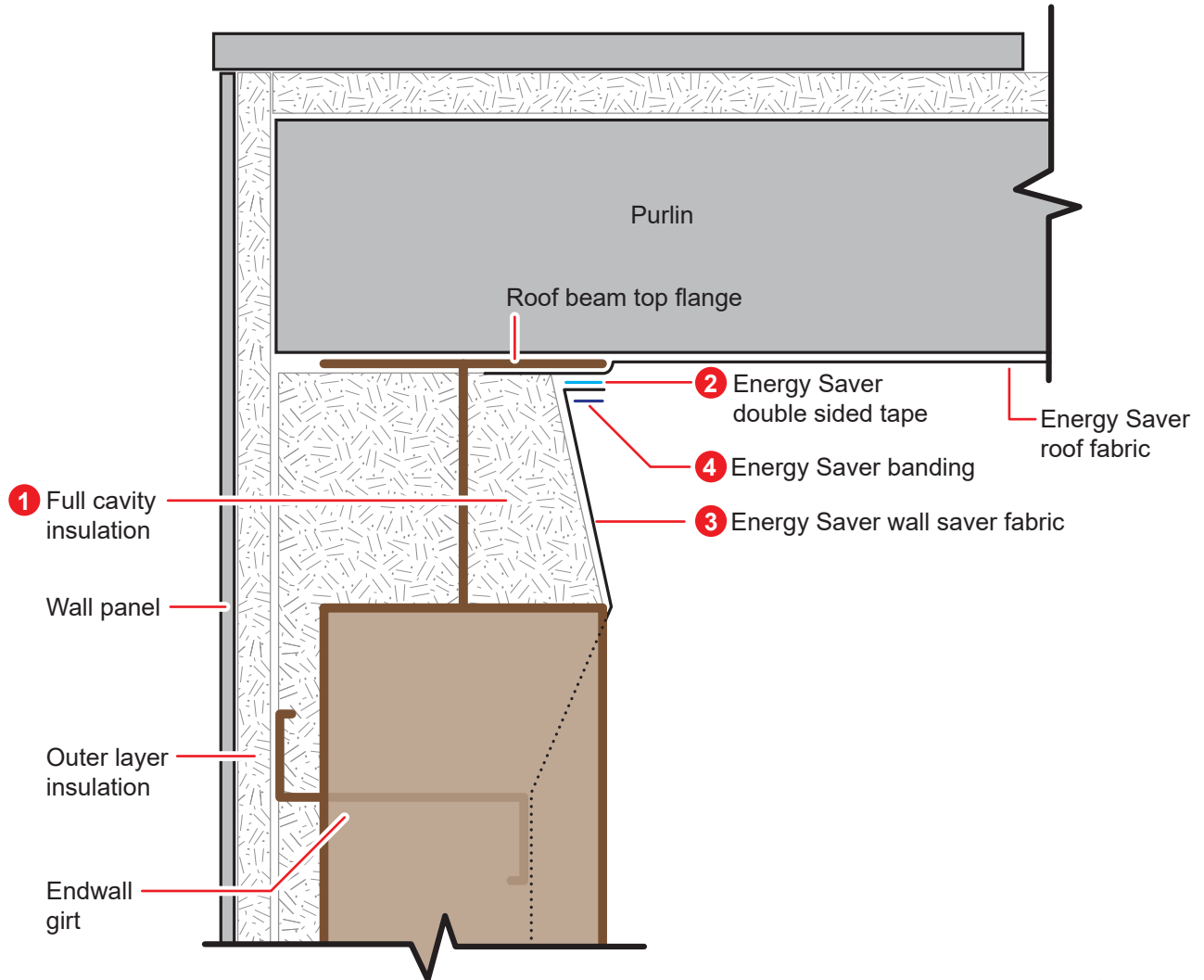


**!** Roof system must be complete before wall connection can be made.

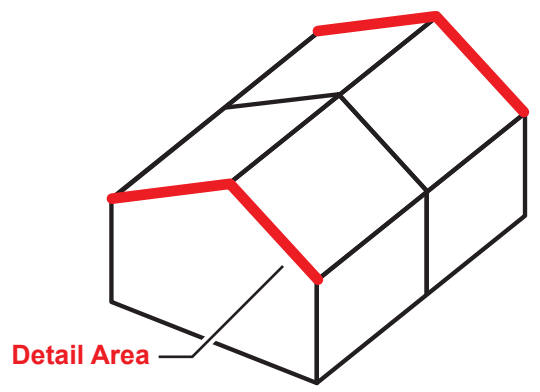


SIL814-002 8/19

Drawing not to scale



**!** Roof system must be complete before wall connection can be made.



SIL814-002 8/19

Drawing not to scale



**ROOF INSTALLATION MUST BE COMPLETE BEFORE FIRST STEP OF THE NON-EXPANDABLE  
ENDWALL INSTALLATION**

- 1** Completely fill roof beam with insulation.
- 2** Apply Energy Saver double sided tape to the Energy Saver roof fabric underneath the inside edge of the roof beam top flange and remove the paper backing.
- 3** Attach the Energy Saver wall fabric.
- 4** Secure liner fabric to beam by attaching Energy Saver banding the full length of the fabric panel. Trim excess fabric along banding using fabric cutter provided by Silvercote.

SIL814-002 8/19

Drawing not to scale

***Silvercote***  
A Distribution International Company

**Energy Saver Roof to  
Energy Saver Non-Expandable Endwall Connection**