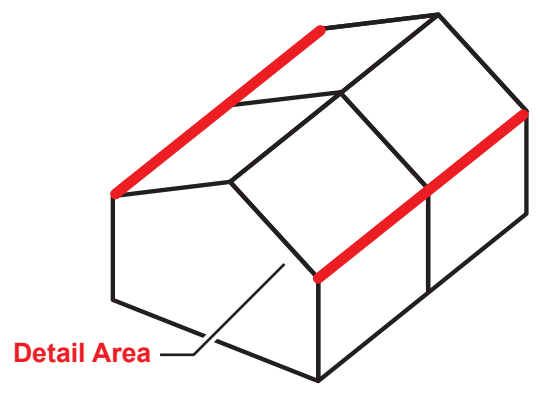
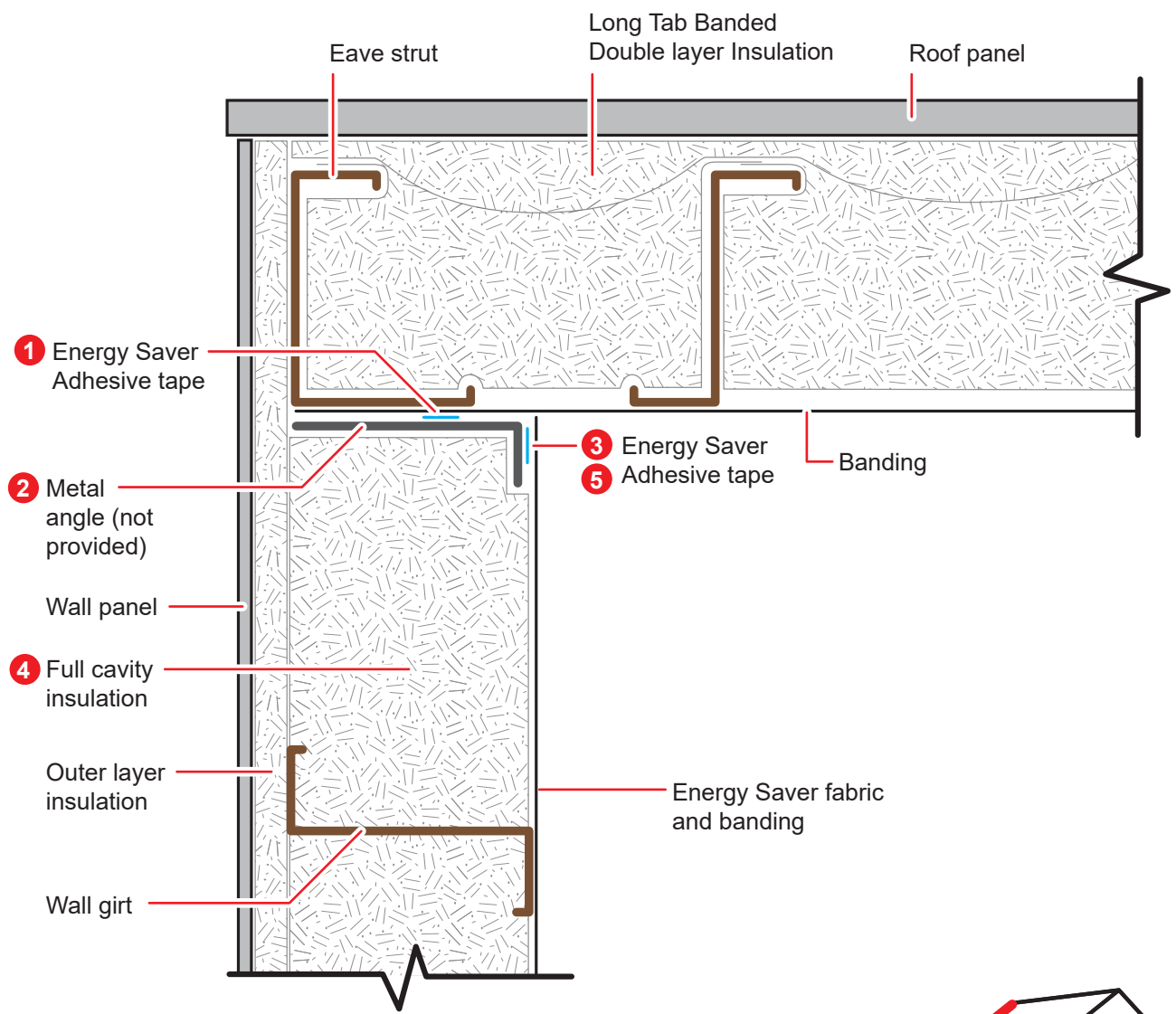


**!** WARNING Metal angle is not provided by Silvercote

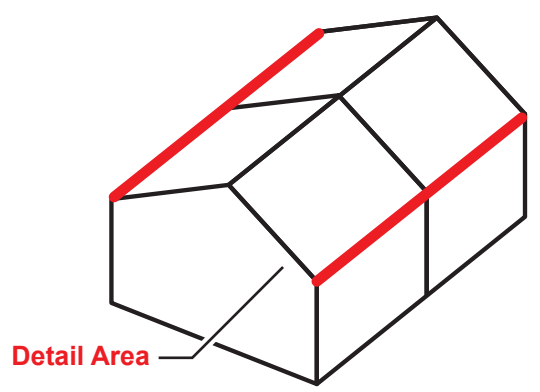


SIL806-002 8/18

Drawing not to scale



**!** WARNING Metal angle is not provided by Silvercote



SIL806-002 8/18

Drawing not to scale



Before installing insulation in wall:

- 1 Apply the supplied Energy Saver double sided tape to the top of the metal angle and remove the paper backing (this will help ensure a seal between the angle and the roof laminated facing).
- 2 Attach the angle to the bottom flange of eave strut. The downward flange of the angle should be plumb with the inside of the girts.
- 3 Apply the Energy Saver double sided tape to the downward leg of the angle, do not remove the paper backing.
- 4 Install wall insulation.
- 5 Peel paper from tape on downward leg of angle and complete installation of the Energy Saver wall liner fabric by sticking it to the downward leg to create a continuous envelope.

SIL806-002 8/18

Drawing not to scale

***Silvercote***  
A Distribution International Company

**Long Tab Banded Roof to Energy Saver Wall Connection**