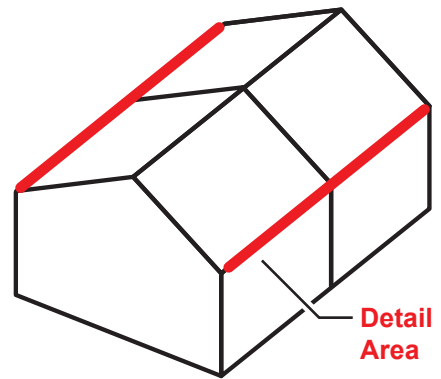
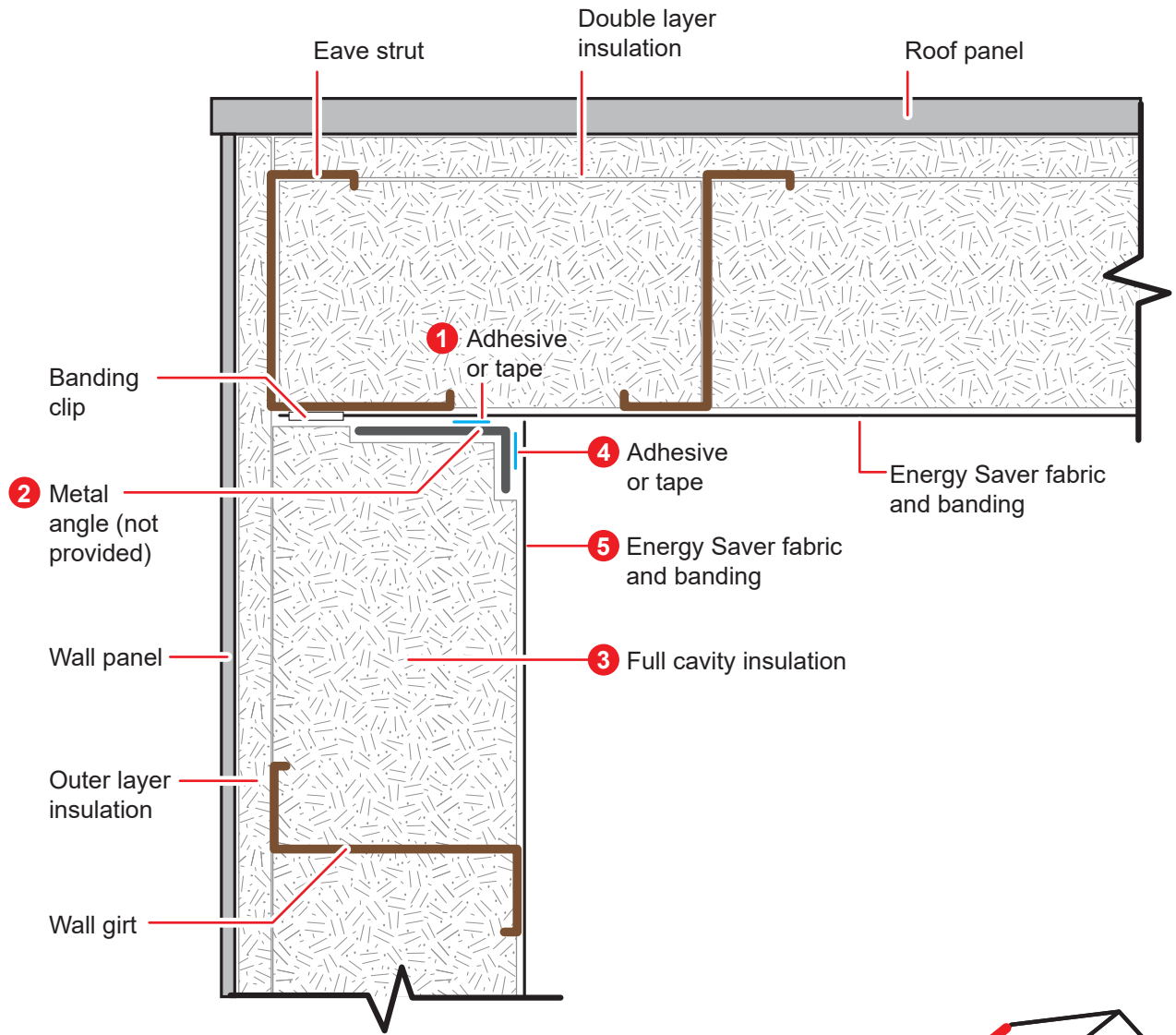


- ❗ Roof system must be complete before wall connection can be made.
- ❗ **WARNING** Metal angle is not provided by Silvercote.

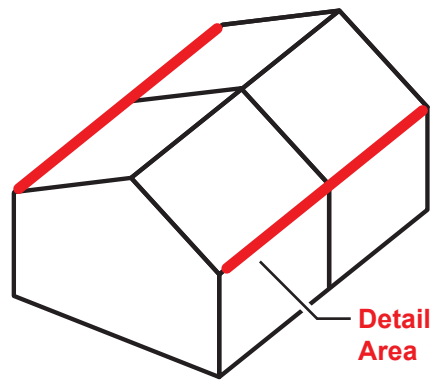


SIL800-002 8/19

Drawing not to scale



- ❗ **Roof system must be complete before wall connection can be made.**
- ❗ **WARNING Metal angle is not provided by Silvercote.**



SIL800-002 8/19

Drawing not to scale



Before installing insulation in wall:

- 1 Apply the supplied double sided tape to the top flange of the angle and remove paper backing.
- 2 Attach the angle to the bottom flange of the eave strut. The downward flange of the angle should be plumb with the inside of the girts. The angle used should be of heavy enough gauge to remain rigid.
- 3 Install the insulation.
- 4 Apply the supplied double sided tape to the downward leg of the angle and remove paper backing.
- 5 Complete installation of the wall liner fabric by sticking it to the downward leg.

SIL800-002 8/19

Drawing not to scale

Silvercote
A Distribution International Company

**Energy Saver Sidewall to Energy Saver Roof
- Angle Connection**