

*Silvercote*TM

A higher degree of insulation



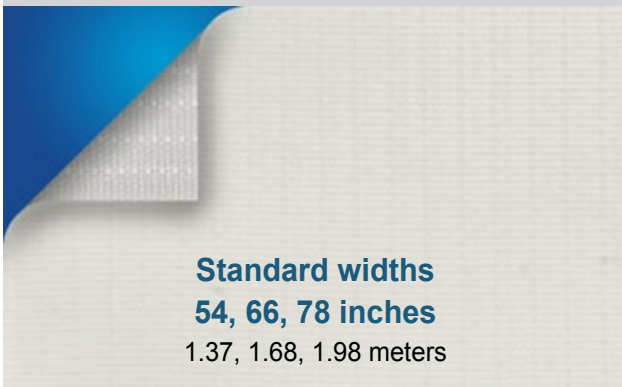
Insulation Facing Product Selection Guide

SPECIALTY FACINGS



GYM GUARD

Athletic facilities and high traffic areas
Highly abuse resistant

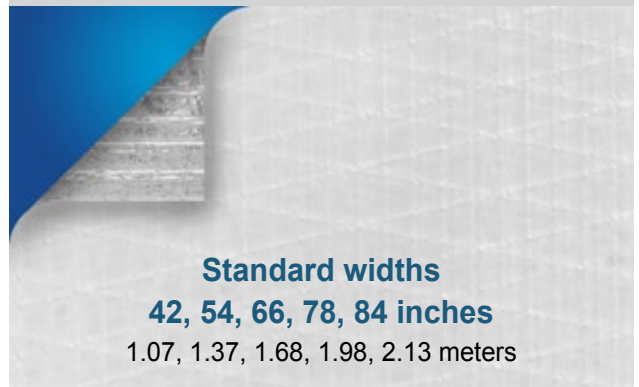


Standard widths
54, 66, 78 inches
1.37, 1.68, 1.98 meters

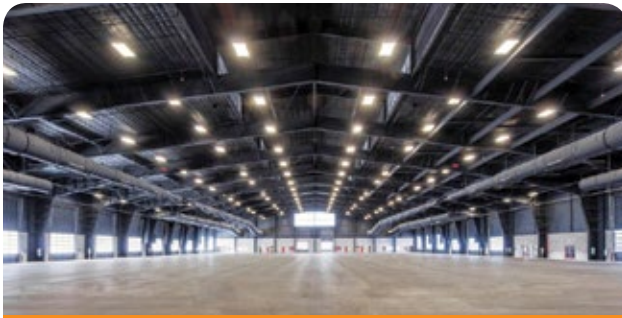


WMP-UV HD®

Intense lighting (natural/artificial):
Auto shops, retail and loading docks
Premium, heavy duty facing with added UV resistance

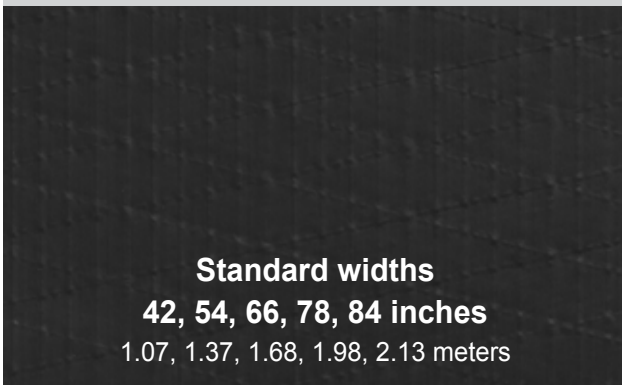


Standard widths
42, 54, 66, 78, 84 inches
1.07, 1.37, 1.68, 1.98, 2.13 meters



BLACK (WMP-VR, WMP-VR-R PLUS, WMP-10 and WMP-50)

Casinos, churches, malls, multi-use facilities,
restaurants, schools and theaters
Unique appearance



Standard widths
42, 54, 66, 78, 84 inches
1.07, 1.37, 1.68, 1.98, 2.13 meters



WMP-RETRO

Specifically designed for re-covering
damaged faced insulation
Easy to install/handle 500 SF rolls



Standard width
47 inches
1.19 meters

MOST POPULAR FACINGS - GENERAL PURPOSE

WMP®-VR

Low cost standard duty
Excellent for most chemical environments



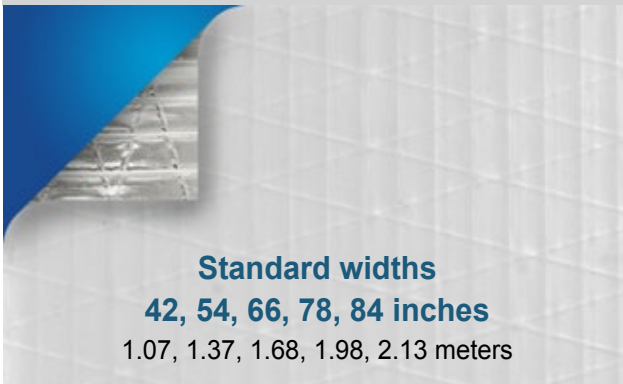
WMP-10

Standard duty
Excellent general purpose



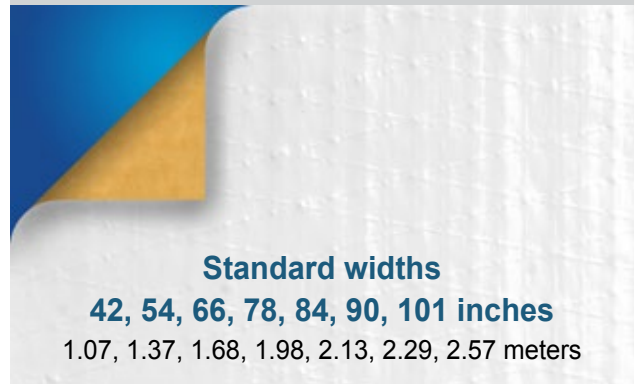
WMP-VR-R PLUS

Low cost standard duty
Excellent for high humidity environments



WMP-30

Heavy kraft for improved strength



Visit www.lamtec.com.

"LAMTEC and "WMP" are registered trademarks of LAMTEC Corporation.



LAMTEC[®]
CORPORATION

LAMTEC[®] products are proudly
manufactured in the USA. 

WMP-50

Premium heavy duty with added abuse
resistance

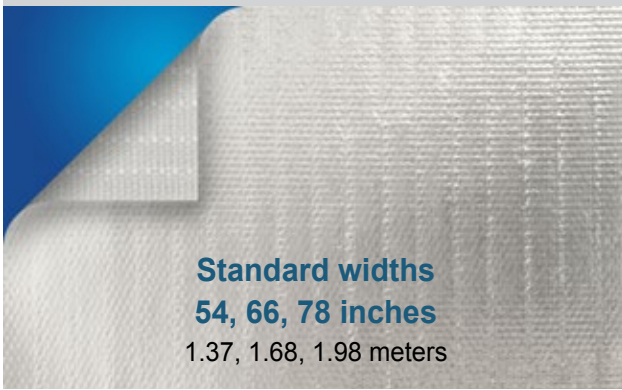


LOW (0.03) EMISSIVITY FACINGS



ARENASHIELD

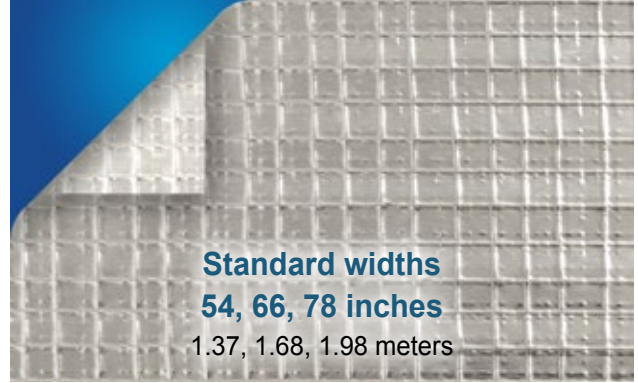
Ice arena roofs
Highly abuse resistant



Standard widths
54, 66, 78 inches
1.37, 1.68, 1.98 meters

RADIANT ICE

Ice arena and general purpose
Double-sided foil with tear resistance and higher operating temperature



Standard widths
54, 66, 78 inches
1.37, 1.68, 1.98 meters

R-3035 HD

Agriculture, warehouses and manufacturing facilities
Heavy duty foil/scrim/kraft



Standard widths
42, 54, 66, 78, 84, 90 inches
1.07, 1.37, 1.68, 1.98, 2.13, 2.29 meters

APPLICATIONS

This document is intended as a general product guide only. You should consult with your building design professional before making your product selection.

WMP-VR	WMP-VR-R-PLUS	WMP-10	WMP-30	WMP-50	WMP-UV HD*	GYM GUARD	ARENASHIELD	RADIANT ICE	R-3035 HD	
●	●	●●	●●	●●●	●●●	○	○	●●	●	Agriculture
●	●	●●	●●	●●●	●●●	●●●	○	●●	○	Athletic facility
●	●	●●	●●	●●●	●●●	●●●	○	●●	●	Government/military
○	○	○	○	○	○	○	●●●	●●	●	Ice arena roofs
●	●	●●	●●	●●●	●●●	●●●	○	●●	●	Manufacturing/industrial
●	●	●●	●●	●●●	●●●	●●●	○	●●	●	Religious/community
●	●	●●	●●	●●●	●●●	●●●	○	●●	●	Service/retail
●	●	●●	●●	●●●	●●●	●●●	○	●●	●	Warehouse/distribution

*Best for applications with high UV exposure from intense lighting (natural/artificial). Application examples include: aircraft hangars, retail, loading docks, auto shops, etc.

ARCHITECTURAL SPECIFICATION FOR FACED FIBERGLASS INSULATION

Insulation

Fiberglass shall be as outlined in the North American Insulation Manufacturers Association (NAIMA 202-96, Rev. 2000) specification, or equal, with an R-value of _____ when not compressed. The fiberglass shall be faced with **A*** on one side. The composite of fiberglass and facing shall have surface burning characteristics not to exceed 25 flame spread and 50 smoke developed when tested in accordance with ASTM E84 or Underwriters Laboratories 723 test method.

Facing

Facing shall be composed of **B***. The resulting facing shall have a water vapor transmission rate of **C*** US Perm (ASTM E96 Procedure A), a mullen burst of **F*** psi. Tensile strength shall be **D*** in the machine direction and **E*** in the cross-machine direction.

Name/Generic ID	Construction	C	D	E	F	WVTR Perm	MD Tensile lbs/inch	XD Tensile lbs/inch	Mullen Burst psi	Beach Puncture	Fire Performance				
											A	B	UL-723	ASTM E84	CAN ULC-S102M
WMP-VR PSK-LD	White polypropylene film, fiberglass & polyester scrim, 11# natural kraft	0.09	40	30	60	125	.85				✓	✓	✓	✓	✓
WMP-VR-R PLUS PSP	White polypropylene film, fiberglass scrim, metallized polyester film	0.02	35	35	100	-	.80				✓	✓		✓	
WMP-10 PSK-STD	White polypropylene film, metallization, fiberglass & polyester scrim, 14# white kraft	0.02	40	35	65	125	.85				✓	✓	✓	✓	✓
WMP-50 PSKP	White polypropylene film, fiberglass & polyester scrim, 30# natural kraft, metallized polyester film	0.02	65	60	120	125	.65				✓	✓	✓	✓	✓
GYM GUARD Film/Fabric	White polypropylene film, metallization, fiberglass & polyester fabric	0.02	195	150	250	650	.70				✓	✓	✓	✓	
ARENASHIELD Foil/Fabric	Aluminum foil, fiberglass & polyester fabric	0.02	195	150	250	550	.65				✓	✓	✓	✓	
R-3035 HD FSK-HD	Aluminum foil, fiberglass & polyester scrim, 30# natural kraft	0.02	55	35	60	85	.80				✓	✓	✓	✓	
RADIANT ICE FSPF	Aluminum foil, polyester film, fiberglass scrim, aluminum foil	0.02	55	55	85	-	-					✓			
WMP-30 PSK-HD	White polypropylene film, metallization, fiberglass & polyester scrim, 30# natural kraft	0.02	55	40	70	105	.75				✓	✓	✓	✓	
WMP-UV HD PSKP-UV	White coating, white polypropylene film, fiberglass & polyester scrim, 30# natural kraft, metallized polyester film	0.02	65	60	120	125	-					✓			

*Specification data for each product is located above. **As tested with 3" fiberglass blanket.



silvercote.com
