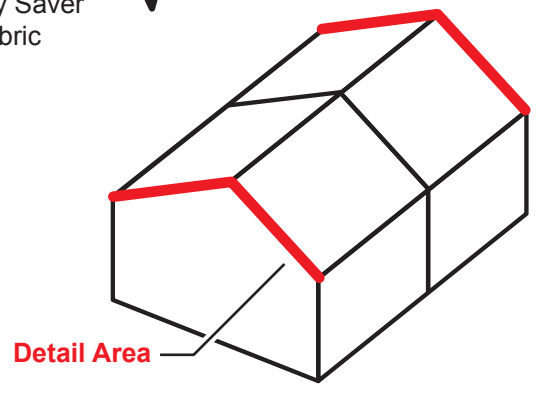
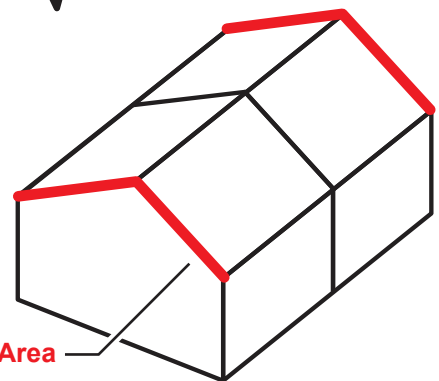
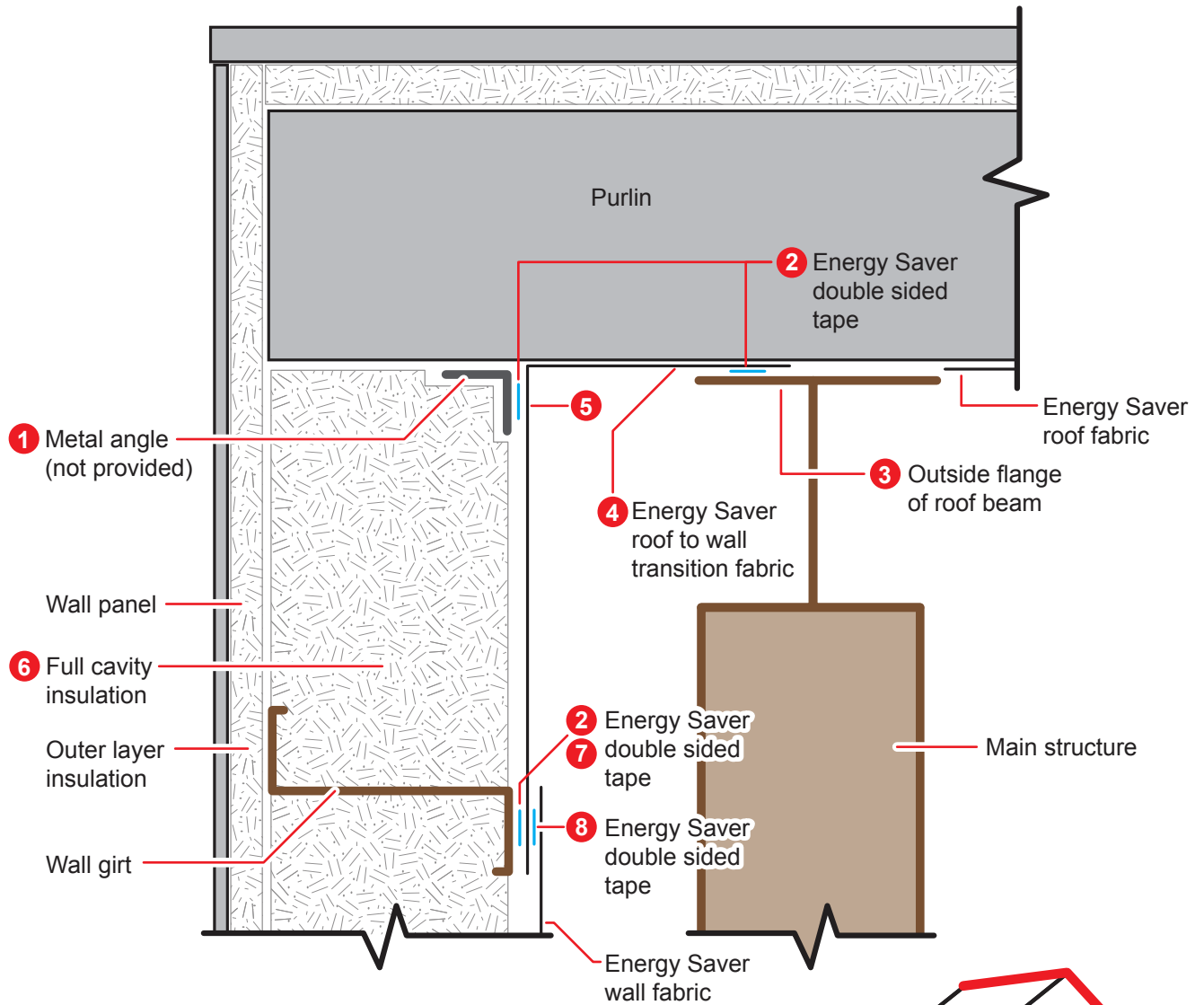


! WARNING metal angle is not provided by Silvercote.



SIL813-001 4/17

Drawing not to scale



! WARNING metal angle is not provided by Silvercote.

SIL813-001 4/17

Drawing not to scale



**THE FOLLOWING MUST BE COMPLETED BEFORE ROOF INSTALLATION
AND FIRST STEP OF WALL INSTALLATION**

- 1** Attach the metal angle to the bottom flange of the purlins. The downward leg should be plumb with the girts below.
- 2** Apply the supplied Energy Saver double sided tape to the wall girt. Do not remove paper backing.
- 3** Apply the supplied Energy Saver double sided tape to the top of the outside flange of the roof beam and the metal angle and remove paper backing.
- 4** Attach roof to wall transition panel to the outside flange of the roof beam.
- 5** Smooth out all wrinkles and attach fabric to tape at inside of metal angle.
- 6** Install insulation in the upper cavity from the outside of the building.
- 7** Remove paper backing from the Energy Saver double sided tape at the wall girt and attach the Energy Saver fabric.
- 8** Apply Energy Saver double sided tape over fabric at wall girt and remove backing.
- 9** Continue installation of the wall panels per the Energy Saver Wall Install Instructions.

SIL813-001 4/17

Drawing not to scale



**Energy Saver Roof to Energy Saver
Expandable Endwall Metal Angle Connection**