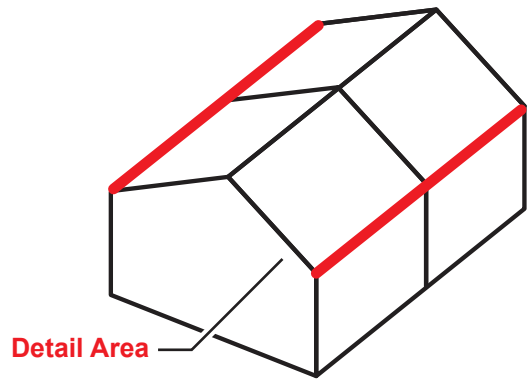
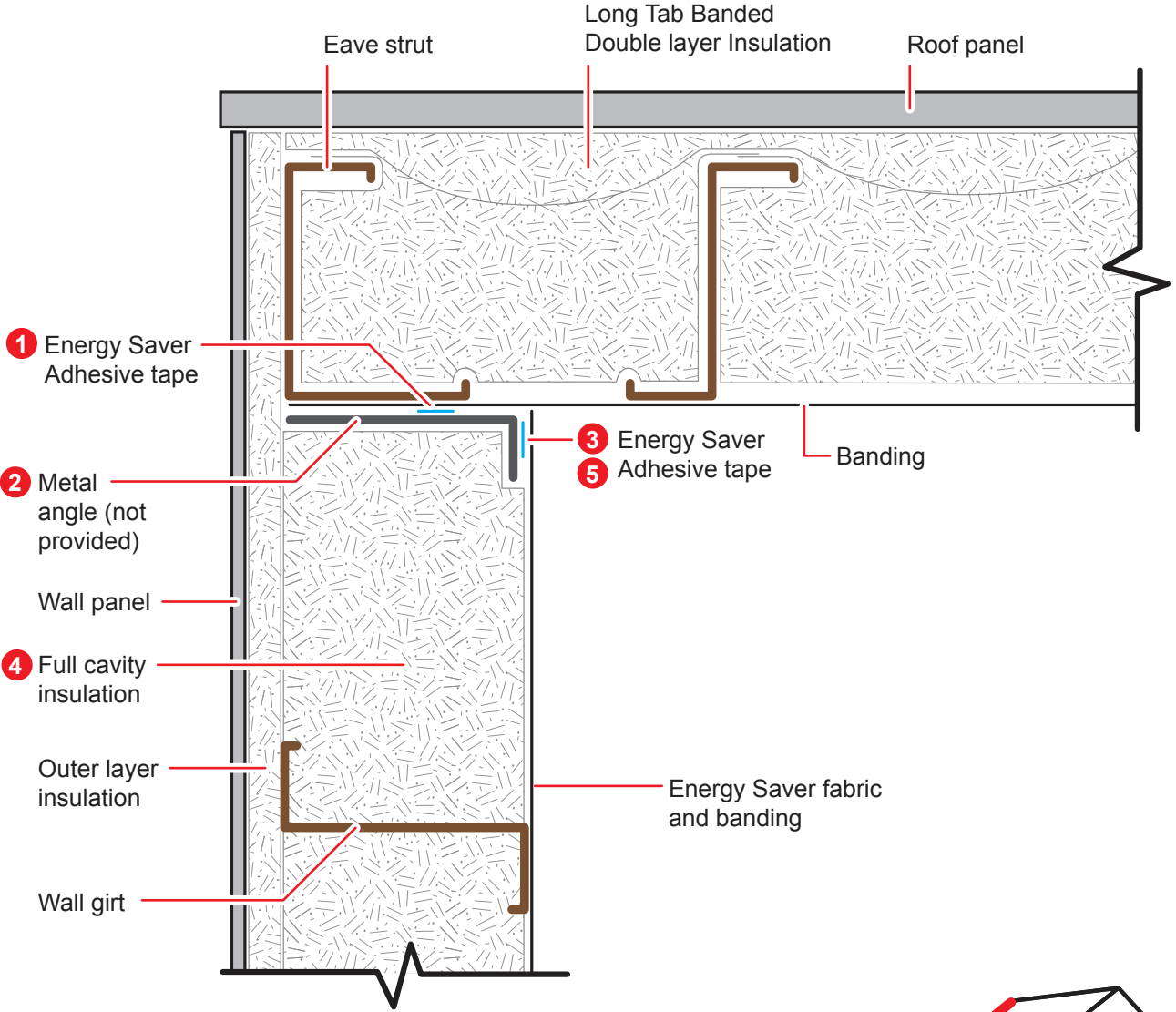


! **WARNING** Metal angle is not provided by Silvercote



SIL806-001 4/17

Drawing not to scale



1 Energy Saver Adhesive tape

2 Metal angle (not provided)

Wall panel

4 Full cavity insulation

Outer layer insulation

Wall girt

Long Tab Banded Double layer Insulation

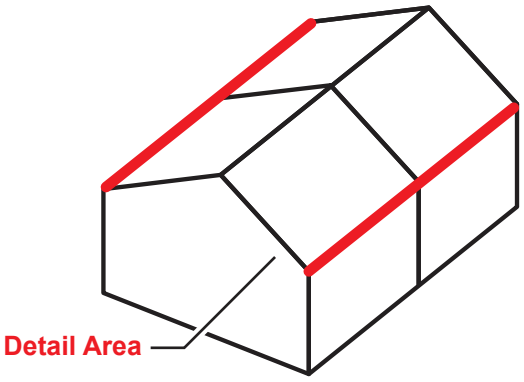
Roof panel

3 Energy Saver Adhesive tape

Banding

Energy Saver fabric and banding

! WARNING Metal angle is not provided by Silvercote





Before installing insulation in wall:

- 1 Apply the supplied Energy Saver double sided tape to the top of the metal angle and remove the paper backing (this will help ensure a seal between the angle and the roof laminated facing).
- 2 Attach the angle to the bottom flange of eave strut. The downward flange of the angle should be plumb with the inside of the girts.
- 3 Apply the Energy Saver double sided tape to the downward leg of the angle, do not remove the paper backing.
- 4 Install wall insulation.
- 5 Peel paper from tape on downward leg of angle and complete installation of the Energy Saver wall liner fabric by sticking it to the downward leg to create a continuous envelope.

SIL806-001 4/17

Drawing not to scale



Long Tab Banded Roof to Energy Saver Wall Connection