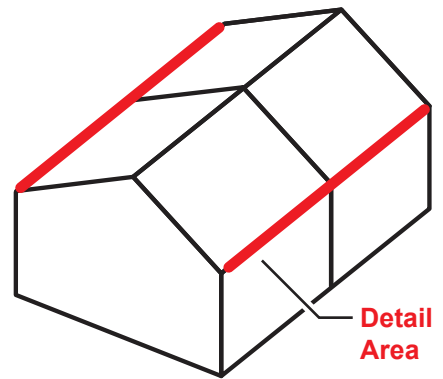
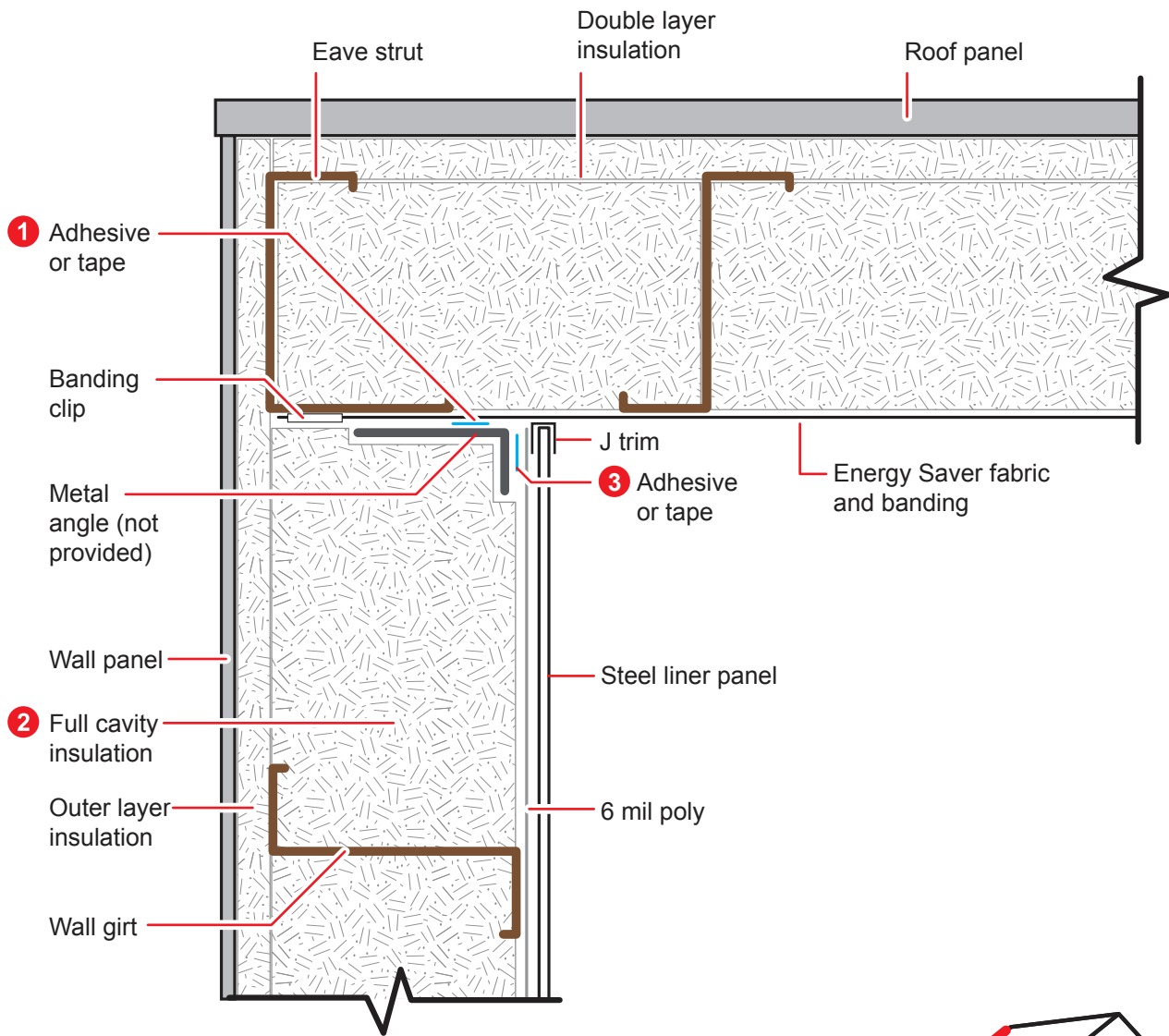


- !** WARNING Roof system must be complete before wall connection can be made.
- !** WARNING Metal angle is not provided by Silvercote.



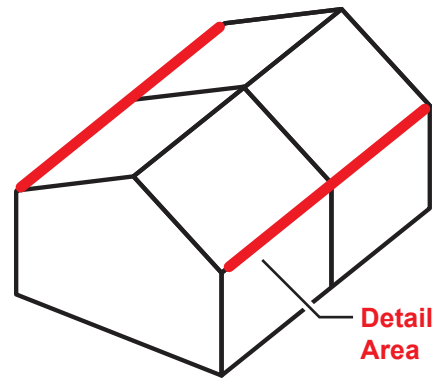
SIL801-001 4/17

Drawing not to scale



! WARNING Roof system must be complete before wall connection can be made.

! WARNING Metal angle is not provided by Silvercote.



SIL801-001 4/17

Drawing not to scale



- 1** Before installing insulation in wall:
Apply the supplied double sided tape to the top flange of the angle. Attach the metal angle to the bottom flange of the eave strut. The downward flange of the angle should be plumb with the inside of the girts. The angle used should be of heavy enough gauge to remain rigid. Peel paper from tape to stick to the roof facing.
- 2** Install the insulation.
- 3** Apply the supplied double sided tape to the downward leg of the angle. Peel paper from tape and complete installation of the wall liner fabric by sticking it to the downward leg to create a continuous envelope. The steel liner panel (not supplied by Silvercote) can then be applied to the angle.

SIL801-001 4/17

Drawing not to scale



Energy Saver Roof to Liner Panel Wall Connection